



QUESTION 3: ISOMETRIC DRAWING

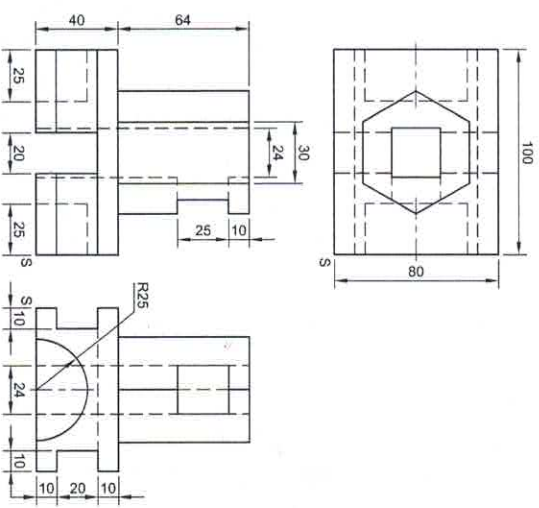
Given:

- The front view, top view and right view of a bracket
- The position of point S on the drawing sheet

Instructions:

Using scale 1 : 1, convert the orthographic views of the bracket to an isometric drawing.

- Make S the lowest point of the drawing.
 - Show ALL necessary construction.
 - NO stencils may be used.
 - NO hidden detail is required.
- [42]**



5 ←

ASSESSMENT CRITERIA

1. AUXILIARY VIEW + PLACEMENT	2	
2. BASE	18½	
3. HEXAGONAL PRISM	17½	
4. CIRCLE + CL	4	
TOTAL	42	

EXAMINATION NUMBER

EXAMINATION NUMBER

4